

# Technical data sheet

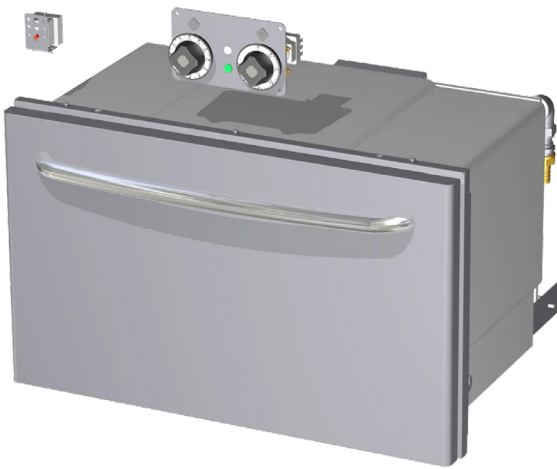
Product features



## Oven electric GN 1/1 convection

<b>Model</b>	<b>SAP Code</b>	00013598
--------------	-----------------	----------

– Device type: Electric unit



<b>SAP Code</b>	00013598	<b>Power electric [kW]</b>	5.320
<b>Net Width [mm]</b>	800	<b>Loading</b>	400 V / 3N - 50 Hz
<b>Net Depth [mm]</b>	615	<b>Width of internal part [mm]</b>	550
<b>Net Height [mm]</b>	480	<b>Depth of internal part [mm]</b>	360
<b>Net Weight [kg]</b>	32.00	<b>Height of internal part [mm]</b>	340

# Technical data sheet

Technical drawing

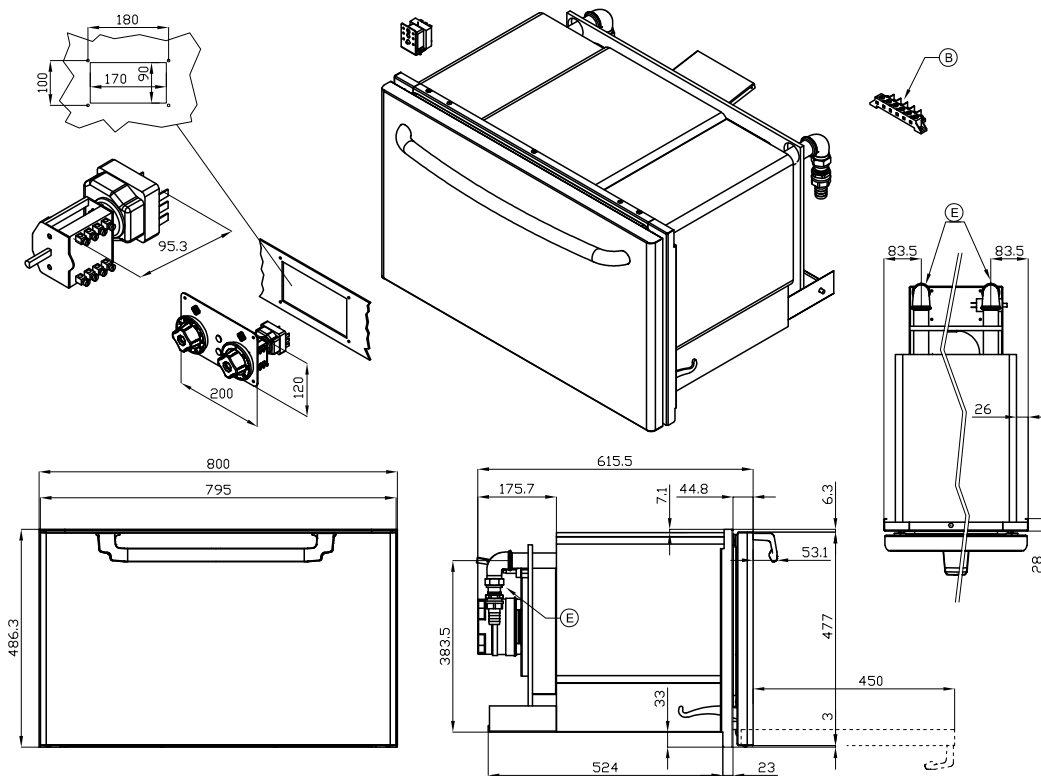


Oven electric GN 1/1 convection

Model

SAP Code

00013598



A	Data plate		B	Electrical connection	
E	Water drainage	(2X)Ø25mm			

# Technical data sheet

Technical parameters



## Oven electric GN 1/1 convection

**Model**

**SAP Code**

00013598

**1. SAP Code:**

00013598

**2. Net Width [mm]:**

800

**3. Net Depth [mm]:**

615

**4. Net Height [mm]:**

480

**5. Net Weight [kg]:**

32.00

**6. Gross Width [mm]:**

830

**7. Gross depth [mm]:**

770

**8. Gross Height [mm]:**

770

**9. Gross Weight [kg]:**

40.00

**10. Device type:**

Electric unit

**11. Construction type of device:**

Drop-in

**12. Power electric [kW]:**

5.320

**13. Loading:**

400 V / 3N - 50 Hz

**14. Device heating type:**

Hot air

**15. Maximum device temperature [°C]:**

300

**16. Minimum device temperature [°C]:**

50

**17. Power control type:**

knob control

**18. Additional information:**

grate: 530 x 325 GN1/1

**19. Oven Type:**

electric hot air

**20. Oven size:**

GN 1/1

**21. Width of internal part [mm]:**

550

**22. Depth of internal part [mm]:**

360

**23. Height of internal part [mm]:**

340

**24. Cross-section of conductors CU [mm<sup>2</sup>]:**

1

- Výkon (kW): 3,7-5 (230 V); 6,4-8,7 (400 V)